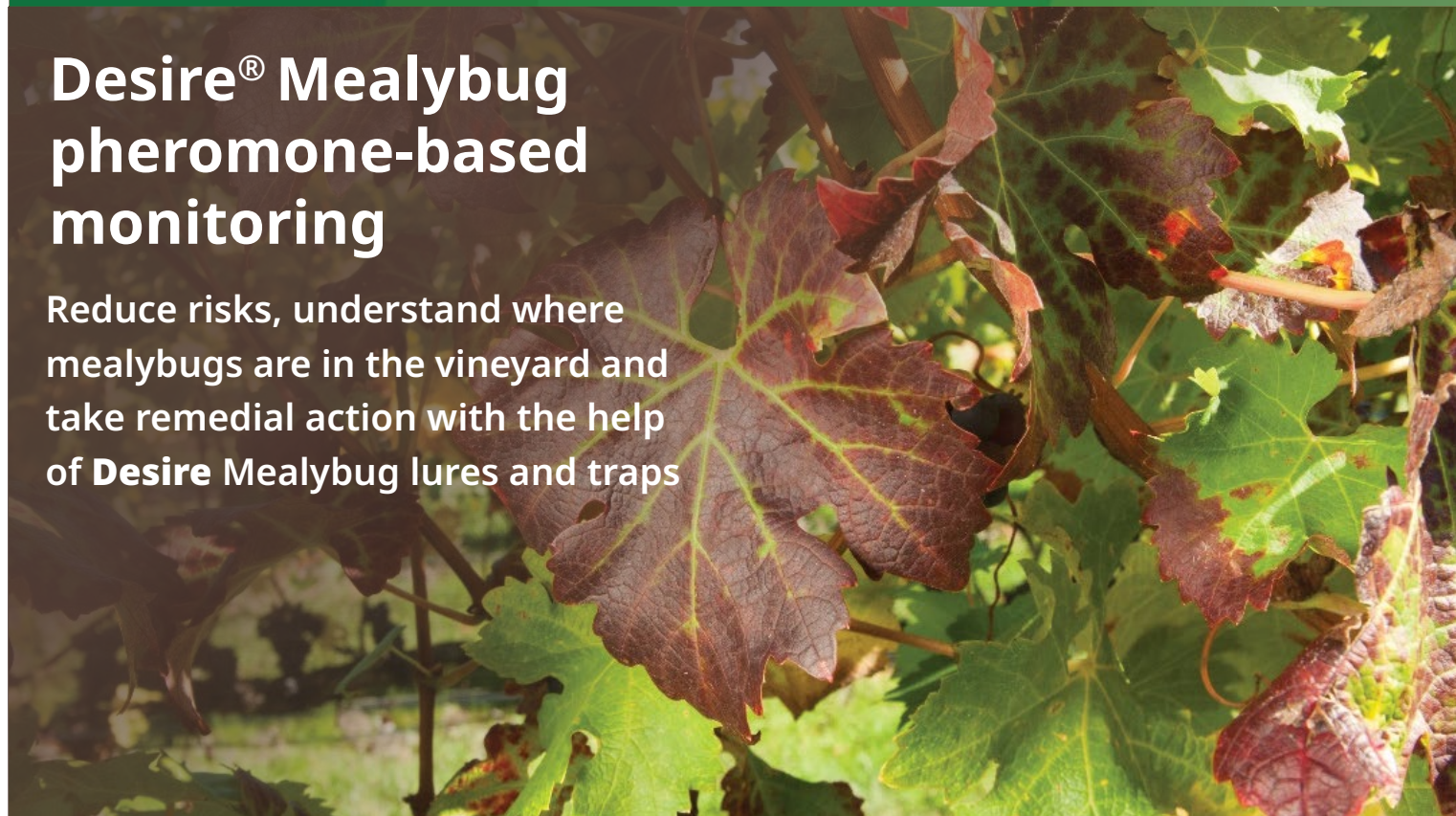




Targeted mealybug control in vineyards

Desire[®] Mealybug pheromone-based monitoring

Reduce risks, understand where mealybugs are in the vineyard and take remedial action with the help of **Desire Mealybug lures and traps**



Mealybugs are serious insect pests in vineyards and can spread rapidly and widely. They are an invasive pest with a sap-sucking feeding habit and are identified by their mealy wax secretion covering their bodies.

Mealybugs can acquire and spread the phloem-limited grapevine leafroll virus (GLR). Effects of GLR are reduced yield, lower soluble solids, increased titratable acidity, decline in anthocyanins in fruit at harvest and delayed fruit, resulting in lower wine quality.

Mealybugs can cause the development of black sooty mould on the vine canopy, including bunches. Black sooty mould can result in fruit being rejected for harvest.

Desire Mealybug lures and traps

UPL's new pheromone-based and BioGro certified monitoring tool mimics the naturally occurring sex pheromones released by females when 'calling' for a mate.

The **Desire** Mealybug lure contains the latest innovation from Plant & Food Research's BIOPROTIA™ series of pheromone products. It is a single, baited lure containing compounds mimicking the citrophilus (*Pseudococcus calceolariae*) and longtailed (*Pseudococcus longispinus*) mealybug sex pheromones. These two mealybug species are most commonly found in New Zealand vineyards.

Monitoring allows sufficient opportunity to understand where mealybugs may be a problem. This knowledge helps decisions on insecticide use and the areas requiring a more intense spray programme relative to areas with low mealybug pressure.

A UPL Mealybug Management Guidance Tool is available to estimate mealybug numbers. For more information contact UPL NZ Ltd.

Getting the best out of Desire Mealybug lures and traps

To gain optimum efficacy and results, the **Desire** Mealybug lure is used together with **Desire** Delta traps.

Trap placement

- Traps should be placed about 70 cm-1 m above the ground. Use the wire to hang the trap from a support wire or post. You may want to identify it with a streamer to make it easier to find.
- To monitor vineyard populations traps must be placed within vineyard blocks (at least 30 m from block borders).

Trap number

- For effective monitoring for mealybug, not less than one trap per 5 ha. For greater population understanding, a higher number of traps can be placed up to 1 trap/ha.
- Change bases every 14 days.

When to start

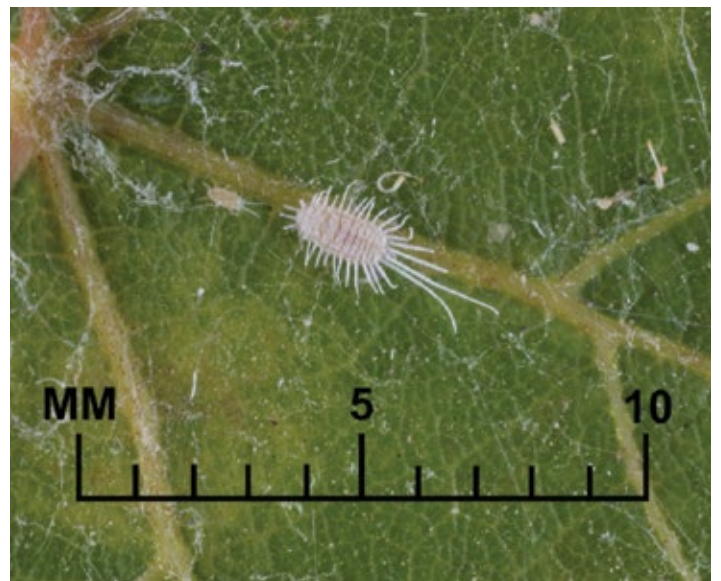
- Place traps either in December for a period of 40- 60 days or after harvest Feb- March, with traps put out to May.
- If traps are placed before harvest, the traps and all lures must be removed before harvesting.

Handling of lures

- The **Desire** Mealybug lure will last up to 60-90 days. When changing bases carefully remove the lure wearing gloves or use a stick to detach and hold the lure and place on new base.
- Keep refrigerated until use.
- Do not touch the lures with your fingers as it may contaminate the cap and make it less attractive to mealybugs.
- Remove all old lures from vineyard and dispose in rubbish as they may compete with the traps.
- Discard lures that have passed their use by date as pheromone chemicals degrade over time.



Desire Mealybug lure and trap – sticky base with 'by catch' moths



Mealybug

Want to know more?

For more information on how to better target mealybugs with **Desire** Mealybug lures and traps contact your local merchant or UPL Regional Manager.

PHEROMONE
desire[®]
Mealy bug

IMPORTANT

This technote is not intended to replace the product label. Always read the label carefully before using any product and follow label instructions. For specialist advice in an EMERGENCY call 0800 243 622.

© Desire is a registered trademark.



UPL New Zealand Limited
PO Box 51584, Pakuranga 2140
Auckland, New Zealand
Phone: 0800 100 325
enquiry.nz@upl-ltd.com
www.upl-ltd.com/nz



Plant & Food
Research
Rangahau Ahumāra Kai

